

# Technical Support to implement reforms to support the development of family centred early childhood intervention services in Greece - ECI Greece

Grant Agreement n° 101048313

## ECI Greece: summary presentation of the project

Irene Bertana, EASPD Senior Policy Officer



Funded by the European Union via the Technical Support Instrument and implemented by EASPD, in cooperation with the European Commission's Directorate- General for Structural Reform Support. (DG REFORM)



# Family-centred ECI

- Target: young children 0-6



- With disabilities
- With / at risk of developmental delays
- Their families



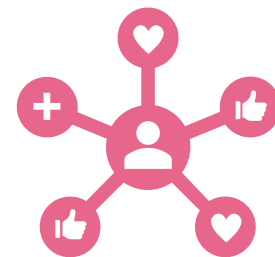
- Neuroplasticity
- Development is strongly influenced by relationship with child and significant adults

## Objective:



- promote child development and wellbeing of child and family
- Nurture positive childhood experience

## How:



- Timely detection of risks
- Family and child assessment / partnership with families
- Individualised Family Support Plans
- Coaching, mentoring, supporting families
- Intervention in the daily context of the child
- Facilitate access to ECEC and education



# Family-centred ECI



## Global research

- Change development trajectory
- Can prevent severe disability
- Improve learning and behaviour



## Human Rights

- UNCRC
- UNCRPD
- Key element for Deinstitutionalisation
- Obligations for State Parties to develop support for children with disabilities and developmental delays



## Elements for an ECI system

- Legal provision & clear definition
- Coordination
- Developmental monitoring & assessment
- Eligibility criteria
- Quality standards
- Sustainable funding
- systems for professional development

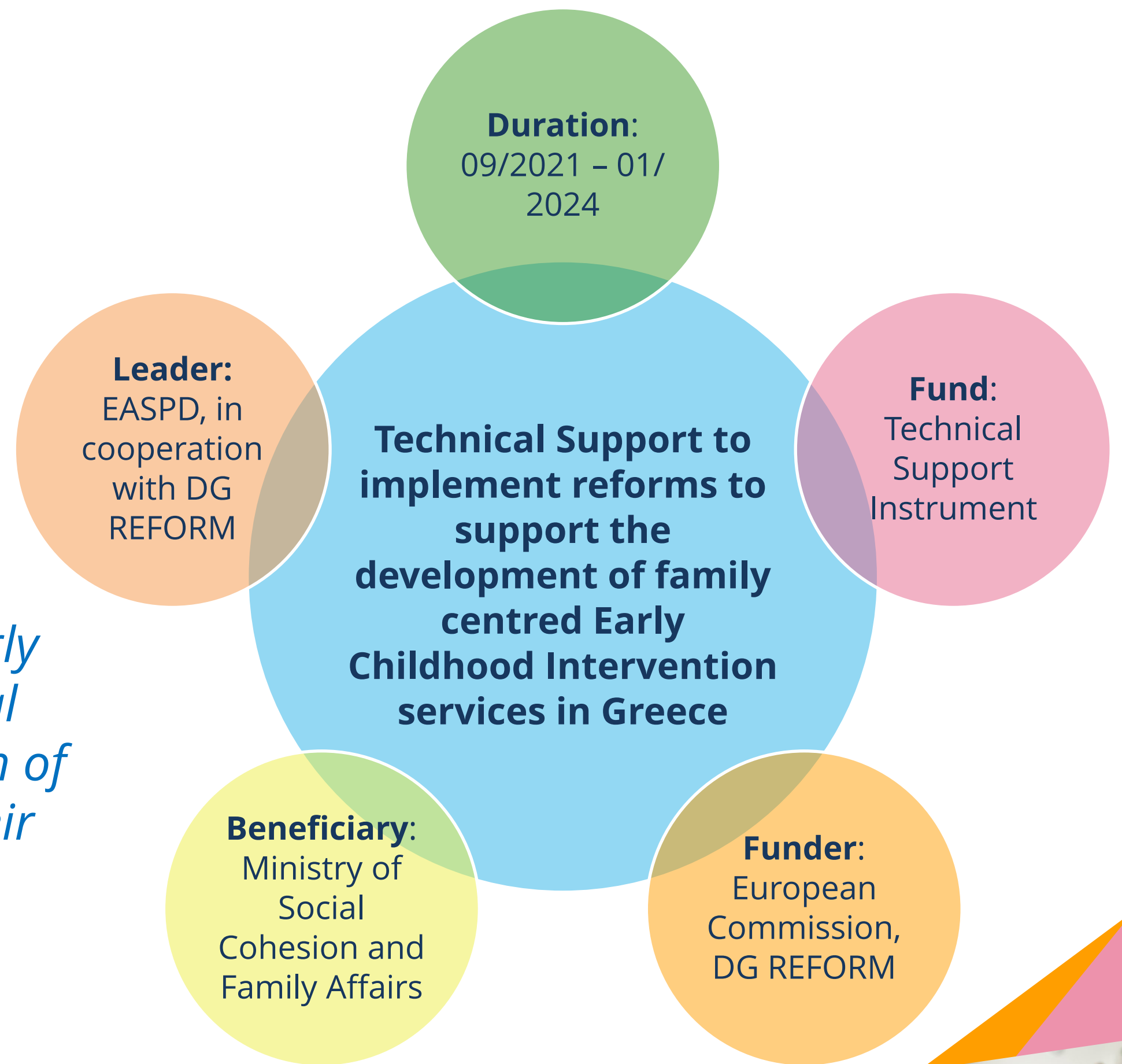


# ECI Greece project



## ECI GREECE

*Supporting the Greek government in developing a modern, evidence-based legislative and financial framework for early childhood intervention services as a crucial step towards DI, and the effective inclusion of children with disabilities in society and their families through quality and adapted care and support."*

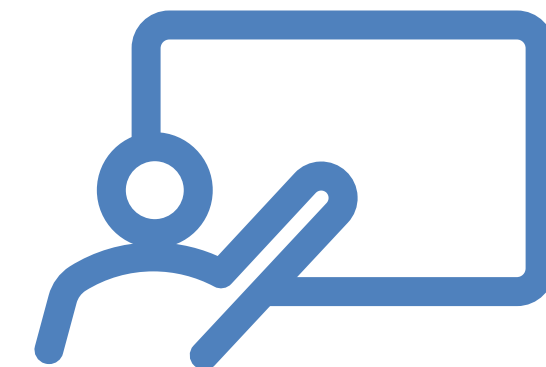


# The projects' architecture





# Training for service providers



## Part 1 – THE WHY OF ECI

- The framework of the family-centred ECI approach
- The neurodevelopmental base of ECI

## Part 2 – THE HOW OF ECI

- Best Practices in ECI
- ECI service circle



# Pilot of family-centred methodologies

	Name of the organization	Legal status	Target group	Location
1	<b>Social Welfare of Attica, “Child Development Centre of Attica “Michalineio”</b>	Public Body	Children with psychosocial and developmental disabilities	Attica
2	<b>Social Welfare of Crete</b>	Public Body	All children	Heraklion, Crete
3	<b>Special therapeutic unit for Autism, General Hospital Aglaia Kyriakou,</b>	Public Body	Children with autistic spectrum disorders	Attica
4	<b>Theotokos foundation</b>	NGO, foundation	Children with developmental disabilities	Attica
5	<b>ELEPAP, Rehabilitation for the disabled, ΕΛΕΠΑΠ</b>	NGO, association	Children with neurodevelopmental issues (psychomotor retardation, cerebral palsy etc.)	Athens; Thessaloniki; Ioannina; Chania; Volos; Agrinio
6	<b>Amimoni, ΑΜΥΜΟΝΗ</b>	NGO, Parents Association	Multiply Disabled Visually Impaired children	Attica
7	<b>PEGAP, ΠΕΓΚΑΠ</b>	NGO, Parents Association	Children with developmental disabilities	Attica

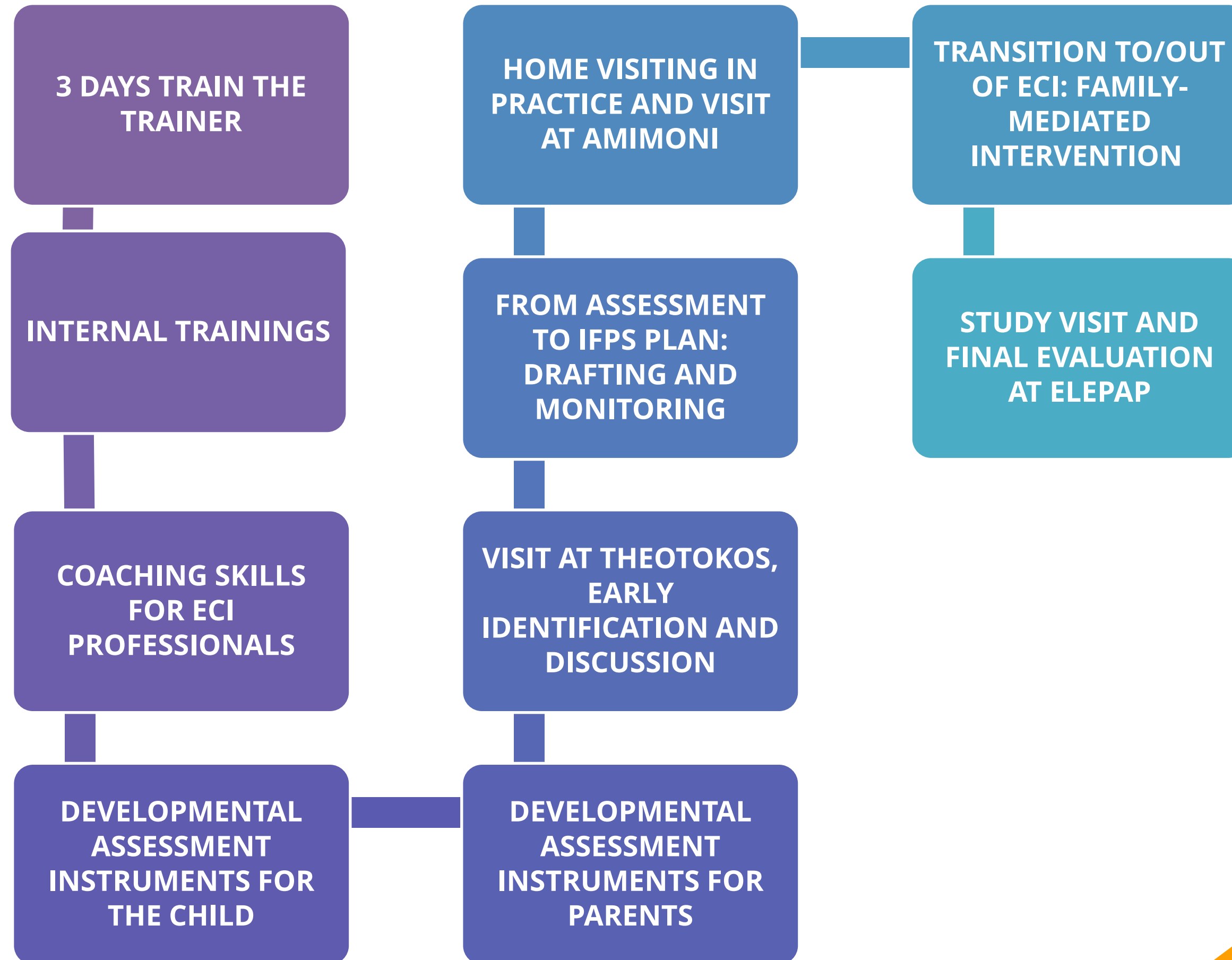


# Pilot of family-centred methodologies





# Pilot of family-centred methodologies



# Country Report objectives



**ANALYSE THE CURRENT ECI SYSTEM IN GREECE**

**CHANGE THE CURRENT CONCEPTUAL FRAMEWORK OF ECI IN GREECE**

**IDENTIFY OPPORTUNITIES AND INFORM POLICIES**



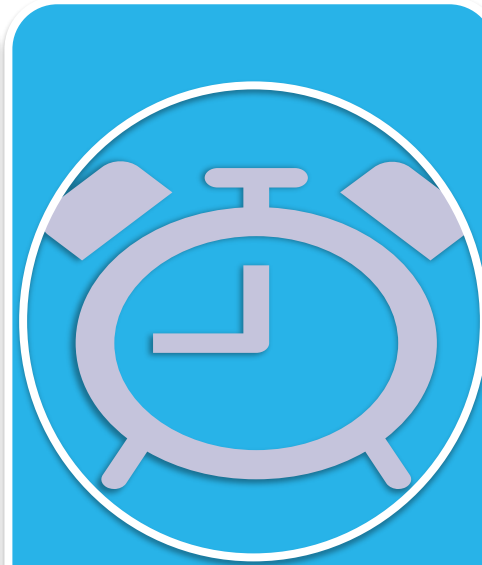
# Findings



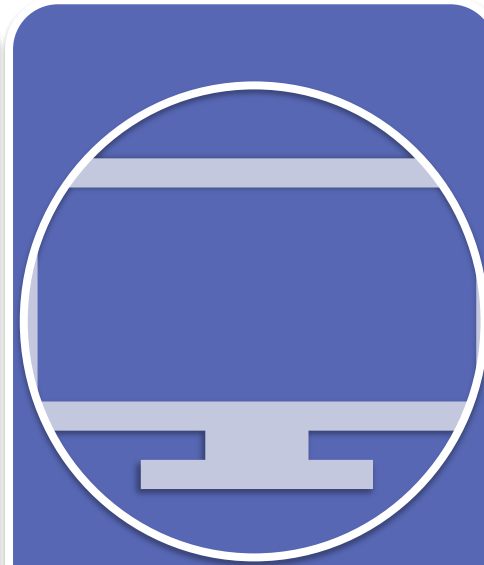
**LACK OF  
UNIFORM  
QUALITY  
STANDARDS  
AND  
REGULATIONS**



**UNEQUAL  
AVAILABILITY  
AND  
ACCESSIBILITY  
OF ECI**



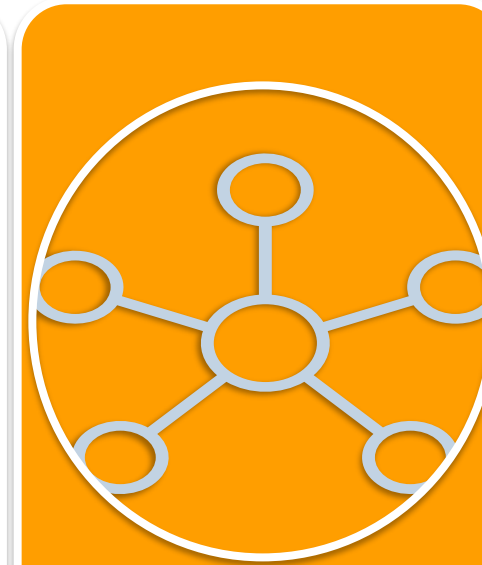
**DELAYED  
RESPONSE TO  
CHILDREN**



**UNDERDEVELOP  
ED SCREENING  
AND REFERRAL  
SYSTEM**



**LACK OF  
COMMON  
PROCEDURES  
TO INVOLVE  
FAMILIES**



**LACK OF  
COORDINATION**



**MEDICAL  
APPROACH**







[www.ecigreece.eu](http://www.ecigreece.eu)



HELLENIC REPUBLIC  
Ministry of Social Cohesion  
and Family Affairs

Definition ECI Greece Project Tools for families Tools for professionals Policies & practices



Funded by the  
European Union

# EARLY CHILDHOOD INTERVENTION IN GREECE



# Action plan for ECI in Greece



**KEY STAKEHOLDERS INVOLVEMENT**



**COUNTRY REPORT + PILOT EXPERIENCE**



**DRAFTING ACTION PLAN**



**DISCUSSION, REVISION and APPROVAL**





European Association of Service providers  
for Persons with Disabilities



**Funded by the European Union via the Technical Support Instrument and implemented by EASPD, in cooperation with the European Commission's Directorate- General for Structural Reform Support. (DG REFORM)**

Thank you!

